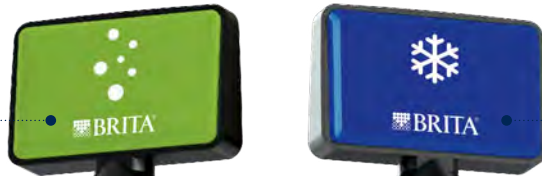


# VIVREAU Bottler

A high-capacity dispenser solution.



Easy-to-use lever-type dispenser tap



Flow rate up to 3 l/min

Stainless steel taps

Stainless steel drip tray  
Plumbed-to-waste option

Easy-to-clean removable nozzles

Ideal for e.g.

- Back of house pantry for conferences, banquets or restaurants
- Bars
- Breakfast buffets

## Benefits

- Dispenses high volumes of chilled still and sparkling water on demand
- High-performance ice-bank refrigeration for chilled water at consistently low temperatures
- Capacity: 80 l/h or 180 l/h

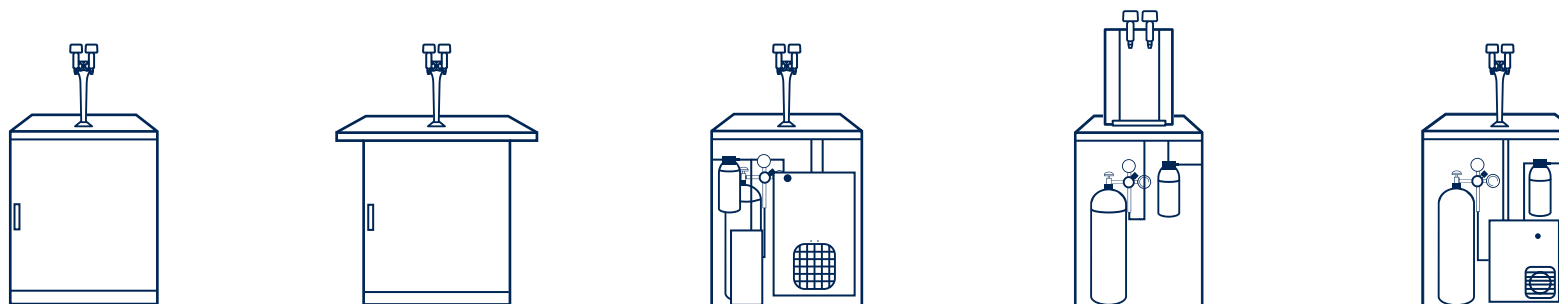
## Three installation options

- Countertop
- Floorstanding
- Tap system



# VIVREAU Bottler

## Technical data



Model	BRITA VIVREAU Bottler 101	BRITA VIVREAU Bottler 102	BRITA VIVREAU Bottler 103	BRITA VIVREAU Bottler 104	BRITA VIVREAU Bottler 105
Design / Type	Floorstanding	Floorstanding semi integrated	Tap system	Countertop	Tap system
Types of water					
Chilled still	•				
Sparkling	•				
Specification					
Cooling capacity	180 l/h			80 l/h	
Fits into base cabinet with the following dimensions (W x H x D)	-	-	700 x 800 x 600 mm	-	600 x 800 x 600 mm
System dimensions (W x H x D)	595 x 850 x 590 mm (base cabinet only) 180 x 490 x 220 mm (tap) 595 x 1335 x 590 mm (total system)	595 x 850 x 590 mm (system cabinet) 180 x 490 x 220 mm (tap)	380 x 668 x 420 mm (cooler) 170 x 380 x 350 mm (carbonator) 180 x 490 x 220 mm (tap)	370 x 540 x 496 mm	360 x 440 x 360 mm (cooler carbonator) 180 x 490 x 220 mm (tap)
Dispensing height	325 mm				320 mm
Weight	74.5 kg (system) 2 kg (tap)		50 kg (cooler) 13 kg (carbonator) 2 kg (tap)	33.8 kg	35.4 kg (cooler carbonator) 2 kg (tap)
Max. power consumption	1150 W		1817 W	1173 W	
Max. flow rate	3 l/min			2 l/min	
Order number					
	1022755 Bottler 101-2-FS-0 CU GB	1022758 Bottler 102-2-FS-0 CU GB	1022757 Bottler 103-2-TS-0 CU GB	1022756 Bottler 104-2-CT-0 CU GB	1022930 Bottler 105-2-TS-0 CU GB

The food-grade quality and safety of BRITA water filter products are tested and verified by independent institutions



\*applies to all materials that come into contact with water